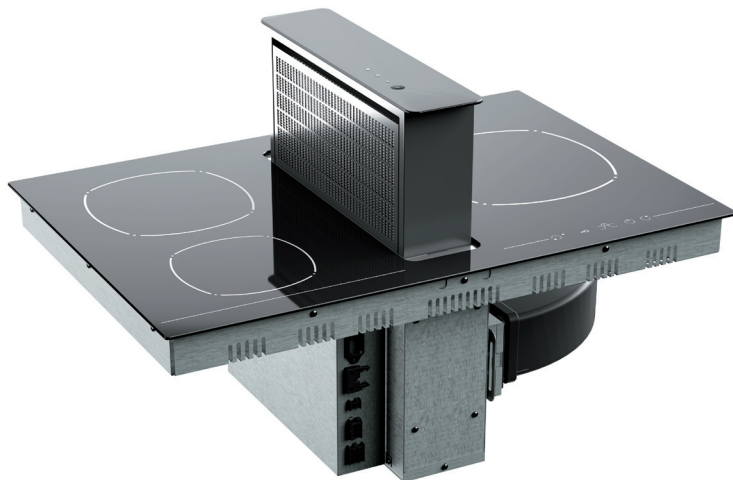


A



PIANO COTTURA_HOB

| | |
|-----------------------------|-----------|
| Tecnologia | Induzione |
| Technology | Induction |
| Potenza massima assorbita W | 7200 |
| Max absorbed power W | 7200 |
| Controllo | Touch |
| Control | Touch |
| Livello di potenza | 9 |
| Power Level | 9 |

| | |
|-------------|------------------|
| R1 Ø mm - W | 160 - 1400 |
| R2 Ø mm - W | 200 - 2300(3000) |
| R3 Ø mm - W | 300 - 3000(3500) |

ECO-DESIGN

| | |
|--------------------------------|-------------|
| Energy consumption for Kg (EC) | 186,9 Wh/Kg |
| R1 Wh/Kg | 176,4 Wh/Kg |
| R2 Wh/Kg | 191,5 Wh/Kg |
| R3 Wh/Kg | 193,0 Wh/Kg |



CAPPA_COOKER HOOD

| | |
|---------------------|--------------------------------|
| Finitura | Inox 430 SB - Vetro nero |
| Finishing | St. Steel 430 SB - Black glass |
| Comandi | Touch |
| Controls | Touch |
| Illuminazione | - |
| Lighting | - |
| Filtro antigrasso | Pannello alluminio |
| Grease filter | Aluminium panel |
| Motore (W) | 1 x Brushless radiale |
| Motor (W) | 1 x Radial brushless |
| Flangia uscita aria | 150 mm |
| Air outlet flange | 150 mm |
| EEl | A |
| EEl | A |

PRESTAZIONI_PERFORMANCES

| | | | | |
|--|-----|-----|-----|-----|
| Velocità | 1 | 2 | 3 | INT |
| Speed | 1 | 2 | 3 | INT |
| Capacità di aspirazione punto iec (m3/h) | 250 | 420 | 590 | 745 |
| Air capacity iec point (m3/h) | 250 | 420 | 590 | 745 |
| Pressione (PA) | 270 | 390 | 510 | 620 |
| Pressure (PA) | 270 | 390 | 510 | 620 |
| Potenza assorbita (W) | 85 | 110 | 145 | 175 |
| Input (W) | 85 | 110 | 145 | 175 |
| Rumorosità (db IEC) | 44 | 56 | 63 | 68 |
| Noise Level (db IEC) | 44 | 56 | 63 | 68 |

